



**RBM SYSTEMS
HYDRONIC HEATING
PRODUCT CATALOGUE**



RBM

HYDRONIC HEATING PRODUCT CATALOGUE 2025

02. CLIMATE COMFORT & HEATING

Page

PIPES & POSITIONING BOARDS	8
MANIFOLDS & ACCESSORIES	12
MIXING & DISTRIBUTION UNITS	14
FILLING & SAFETY VALVES	21
ZILMET EXPANSION VESSELS	22
SAFETY RELIEF VALVES	23
AUTOMATIC AIR VENTS	24
AIR & DIRT SEPARATORS & HYDRAULIC SEPARATORS	26
MAGNETIC FILTRATION (BOILER, HEAT PUMP & COMMERCIAL)	29
ACID CONDENSATION NEUTRALISER	34
RADIATOR VALVES & ACCESSORIES	35
BALANCING & CONTROL VALVES	38
SERVICE & ACCESSORIES	42

RBM Systems Pty Ltd

PO Box 4104
Gumdale QLD 4154
Australia

ABN 86 640 763 239

+61 7 3073 2428

hello@rbmsystems.com.au
rbmsystems.com.au

<i>Code</i>	<i>Product Series</i>	<i>Page</i>
PIPES & POSITIONING BOARDS		
Series 3841.B	Kilma Futura Dry Insulating Panel	8
Series 2517	Kilma Hi-Performance Plus Multi-Layer Pipe	8
Series 464	Kilma-Flex PE-Xc Polyethylene Pipe	9
Series 2009	Kilma-Flex PE-Xa Polyethylene Pipe	9
Series 1484	Kilma-Flex PE-RT Polyethylene Pipe	9
Series 1361	Kilma-Super-Strong Pipe Positioning Board	10
Series 469	Fastener Clip Tool	10
Series 603	Bend Former	10
Series 667	Universal Unwinder for Pipe Coils	10
Series 1938	Kilma-Bull Insulating Panel	11
Series 1978	Kilma-Roll Insulating Panel	11
MANIFOLDS & ACCESSORIES		
Series 1410.D	Compact Polymer Manifold Kit	12
Series 1002.C	Compact Manifold Kit in Anti-Condensation Polymer	12
Series 217.B	Polyethylene Pipe Fitting	13
Series 224.B	Compression fitting for Multi-Layer Pipe	13
Series 208	Flow Meter for Single Circuit	13
	Adjustable Manifold Stand	13
MIXING & DISTRIBUTION UNITS		
Series 1531.A	Kilma-Eco-RF-AT Polymer Fixed Point Mixing Unit	14
Series 1531.B	Kilma-ECO-RF Polymer Fixed Point Mixing Unit	14
Series 3523	Kilma-Ecomix RF Fixed Point Mixing Unit	14
Series 3195	Multimix Booster Unit	15
Series 3197	RD Direct Booster Unit	15
Series 3198	RF Mix Mixing Unit	15
Series 3199	RM Mix Mixing Unit	16
Series 3219	Multimix S32 Hydraulic Separator	17
Series 3222	Insulated pipe kit for S32 & C32	17
Series 3223	Multimix C32 Zone Manifold	17
Series 3227	Wall Support Kit for C32 Zone Manifold	18
Series 3228	RD32 Direct Booster Unit	18
Series 3229	RM MIX32 Mixing Unit	18



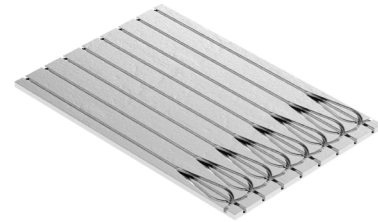
<i>Code</i>	<i>Product Series</i>	<i>Page</i>
Series 3234	RD25 CONT Direct Booster Unit	19
Series 3235	RF25 CONT Fixed Point Booster Unit	19
Series 3236	RM25 CONT Climatic Booster Unit	20
FILLING & SAFETY VALVES		
Series 3856	SmartFiller Automatic Filling Valve	21
Series 47	Safety Unit	21
Series 4093	ZeroFrost Antifreeze Valve for Heat Pumps	21
Series 124	By-Pass Valves	21
ZILMET EXPANSION VESSELS		
Series Cal-Pro	Zilmet Cal-Pro Expansion Tanks	22
Series Ultra-Pro	Zilmet Ultra-Pro Expansion Tanks	22
	Zilmet Wall Mount Bracket	22
SAFETY RELIEF VALVES		
Series 351	Standard Safety Relief Valves	23
Series 353	Standard Safety Relief Valves with Pressure Gauge	23
AUTOMATIC AIR VENTS		
Series 38	Check Valves	24
Series 791	Miniluft CP Polymer Automatic Air Vent	24
Series 2827.A	Miniluft Compact Brass Automatic Air Vent	24
Series 2828	Miniluft Brass Automatic Airvent	25
Series 3574	Miniluft HP High Performance Airvent	25
Series 2836	Megaluft HP High Performance Deaerator	25
AIR & DIRT SEPARATORS & HYDRAULIC SEPARATORS		
Series 2830.A	Airterm Threaded Deaerator	26
Series 2830.B	Airterm Flanged Deaerator	26
Series 2829.A	Dirterm Threaded Dirt Separator	27
Series 2831.A	Airterm Dirt Threaded Air & Dirt Separator	27
Series 2831.B	Airterm Dirt Flanged Air & Dirt Separator	27
Series 617.A	Threaded Hydraulic Separators	28
Series 617.B	Flanged Hydraulic Separators	28

<i>Code</i>	<i>Product Series</i>	<i>Page</i>
MAGNETIC FILTRATION (BOILER, HEAT PUMP & COMMERCIAL)		
Series 3715.A	MG2 Under-Boiler Magnetic Filter	29
Series 3070.A	MG1 Under-Boiler Magnetic Filter	29
Series 3699	MP1 Magnetic Filter for Hydronic Heat Pumps	30
Series 3833	MP2 Magnetic Filter for Hydronic Heat Pumps	30
Series 2405	SafeCleaner2 Brass Magnetic Dirt Separator	31
Series 2344	SafeCleaner2 Brass Magnetic Dirt Separator with Ball Valves	31
Series 2319	SafeCleaner2 Polymer Magnetic Dirt Separator	31
Series 3548	Mag-nus2 Magnetic Sludge Remover	32
Series 2863	Airterm Mag Threaded Magnetic Air & Dirt Separator	32
Series 3602	MG Compact Magnetic Sludge Remover	33
Series 3541	MG Plus Magnetic Sludge Remover	33
ACID CODENSATION NEUTRALISER		
Series 3286	NT1 Acid Condensation Neutralising Filter	34
Series 3287	Pair of Straight Hose Connection Fittings	34
Series 3288	Pair of Elbow Hose Connection Fittings	34
Series 3289	Insulation Shell for NT1	34
Series 3290	MgO Based Neutralising Bioceramic Compound	34
RADIATOR VALVES & ACCESSORIES		
Series 3937	TL1 by Piero Lissoni Designer Thermostatic Radiator Head	35
Series 4196	Pair of Temperature Limiting Inserts for TL1	35
Series 590.A	Thermostatic Heads	35
Series 48	Angle Valve for Copper or Polyethylene Pipe	36
Series 49	Straight Valve for Copper or Polyethylene Pipe	36
Series 29	Angle Lockshield Valve for Copper or Polyethylene Pipe	36
Series 30	Straight Lockshield Valve for Copper or Polyethylene Pipe	36
Series 71	Compression Fitting for Polyethylene Pipe	37
BALANCING & CONTROL VALVES		
Series 619.A	BalanFlow Threaded Balancing Valves	38
Series 619.B	BalanFlow Flanged Balancing Valves	38
Series 621	Pair of Pressure Plugs for BalanFlow Valves	38



<i>Code</i>	<i>Product Series</i>	<i>Page</i>
Series 2874.B	Pressure Independent Control Valves	39
Series 3717	FCU Combination Valve System	39
Series 3566	Portable Pressure and Flow Rate Measuring Instrument	40
Series 932	Pair of Needle Adapters to Measure Pressure	40
Series 2882	Electromechanical Actuator	41
Series 2881	Thermo-Electric Actuator	41
SERVICE & ACCESSORIES		
Series 4120	Phonofix Stabilising Layer for Paraquet	43
Series 483	Corrugated sheath pipe protector	43
Series 2944.A	Thermo-Electrically Controlled Actuator	43
Series 3189	Thermo-Electrically Controlled Servo Motor	44
Series 778	Vapour Barrier	44
Series 472.A	Base Edging Joint	44
Series 472.B	Base Edging Joint	45
Series 2531	Sound Absorbing L-Shaped Base Edging	45
Series 2532	Adhesive Joint Tape	45
Series 3670	Screed Expansion Joint with Adhesive Base	45
Series 468	Pipe Fastener Clip	46
Series 476.A	Electro-Welded Binding Mesh	46
Series 825	Mesh Fastener Clip	46
Series 475.A	Kilma-Therm Super fluidifying Additive	47
Series 475.B	Polypropylene Short Fibre Additive for Concrete Screeds	47
Series 862.A	Rail for Fastening of the Pipe	47
Series 476.B	Electro-Welded Anchoring Mesh	48
Series 595.A	Automatic Pipe Fastener Clip	48
Series 595.B	Manual Pipe Fastener Clip	48
Series 862.B	Rail for Fastening of the Pipe	48
Series 595.C	Manual Pipe Fastener Clip	48
Series 595.D	Manual Pipe Fastener Clip	49
Series 470	Fixing Clamp	49
Series 1200	Pipe Clip for Mesh	49
Series 1333	Double Mesh Spacer	49

Series 3841.B



Code	Useful Dim. (mm)	Heat Res.	Pack m ²	Pallet m ²
3841.20.10	1200x800x20	0,51	22,08	88,32
3841.25.10	1200x800x25	0,53	18,24	72,96
3841.33.10	1200x800x33	0,78	14,40	57,60
3841.48.10	1200x800x48	1,25	9,60	38,40

Freight charges applicable on this product.

KILMA FUTURA High efficiency insulation panel for dry installations.

Installation pitch 100 mm; coil circuit laying.
Suitable for floor, ceiling and false ceiling installation.

Panel obtained from EPS 300 sheet, milled to allow piping to be laid, top coating with an aluminium layer.

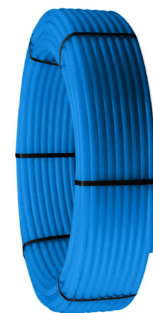
- Real Dim.: 1200X800 mm
- Usable floor area 0.96 m²

Applicable piping type: Hi Performance Plus 16x2 polyethylene.



To install the panel, it is recommended to use specific adhesives compatible with EPS and relative substrate (use KILMA FUTURA AD code 37020002 or else glues as per technical documentation).
To prevent the pipe from coming off the retention guides and to restore the aluminised film (in case this has been removed during operations performed at the building site) use the anodised aluminium adhesive tape code 2018.00.02

Certifications:
HBCD FREE



Series 2517

Pipe Kilma HI-PERFORMANCE PLUS.

4-layer polyethylene pipe for underfloor heating (PE-RT Type II/EVOH/PE-RT).
The outer layer provides strong protection of the EVOH layer against the defects of mechanical agents. (e.g. scratches, gouges ...).
EVOH oxygen barrier pipe, co-extruded, DIN 4726.

Certifications:
Compliant with: EN ISO 22391-2



Code	Measure	Roll (m)	Pack	Pallet m
2517.16.12	16x2	120	1	1680
2517.16.02	16x2	240	1	1680
2517.16.22	16x2	600	1	3600
2517.17.12	17x2	120	1	1680
2517.17.02	17x2	240	1	1680
2517.17.22	17x2	600	1	3600
2517.20.02	20x2	240	1	1680
2517.20.32	20x2	500	1	2000

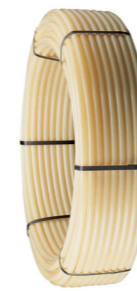
Size: Outside Ø x pipe thickness.



Externally protected EVOH barrier against any mechanical damage.



Freight charges applicable on this product.



Series 464

KILMA-FLEX PE-Xc pipe.

3-layers polyethylene pipe for underfloor heating. EVOH oxygen barrier pipe, co-extruded, DIN 4726.

Certifications:
Compliant with: EN ISO 15875-2



Code	Measure	Roll (m)	Pack	Pallet m
464.08.02	8x1	1000	1	7000
464.10.02	10x1,2	1000	1	7000
464.16.02	16x2	120	1	1680
464.16.12	16x2	240	1	1680
464.16.22	16x2	600	1	3600
464.17.12	17x2	120	1	1680
464.17.02	17x2	240	1	1680
464.17.22	17x2	600	1	3600
464.20.02	20x2	240	1	1680
464.20.32	20x2	500	1	2000
464.25.02	25x2,3	240	1	960
464.25.22	25x2,3	310	1	1240

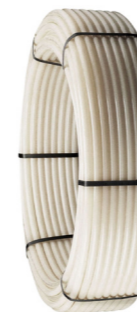
Cross-linked polyethylene according to the "C" method with Beta type rays.
Size: Outside Ø x pipe thickness.



Do not expose to direct sunlight.



Freight charges applicable on this product.



Series 2009

KILMA-FLEX PE-Xa pipe

3-layers polyethylene pipe for underfloor heating. EVOH oxygen barrier pipe, co-extruded, DIN 4726.

- Type: PE-Xa

Certifications:
Compliant with: EN ISO 15875-2

Code	Measure	Roll (m)	Pack	Pallet m
2009.17.02	17x2	600	1	2400
2009.20.02	20x2	500	1	1500

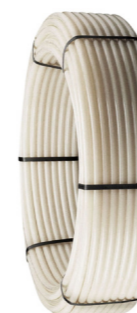
Cross-linked polyethylene according to the "A" method with peroxides.
Size: Outside Ø x pipe thickness.



Do not expose to direct sunlight.



Freight charges applicable on this product.



Series 1484

KILMA-FLEX PE-RT pipe.

3-layers polyethylene pipe for underfloor heating. EVOH oxygen barrier pipe, co-extruded, DIN 4726.

- Type: PE-RT

Certifications:
Compliant with: EN ISO 22391-2



Code	Measure	Roll (m)	Pack	Pallet m
1484.16.22	16x2	120	1	1680
1484.16.32	16x2	240	1	1680
1484.16.02	16x2	600	1	3600
1484.17.12	17x2	120	1	1680
1484.17.02	17x2	240	1	1680
1484.17.22	17x2	600	1	3600
1484.20.02	20x2	500	1	2000
1484.25.12	25x2,3	240	1	960
1484.25.02	25x2,3	310	1	1240

Polyethylene of raised temperature resistance.
Size: Outside Ø x pipe thickness



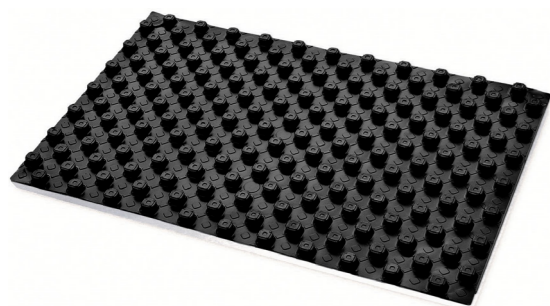
Do not expose to direct sunlight.



Freight charges applicable on this product.



Series 1361



Code	Useful Dim. (mm)	Insul. Th. (mm)	Pack	Pack m ²	Pallet m ²
1361.10.00	1300x800x33	10	18	18,72	93,60
1361.18.00	1300x800x40	18	14	14,56	72,80
1361.28.00	1300x800x50	28	10	10,40	52
1361.42.00	1300x800x65	42	7	7,28	36,40
1361.50.00	1300x800x73	50	6	6,24	31,20

Freight charges applicable on this product.

KILMA-SUPER-STRONG Panel "KILMA-SUPER-STRONG".

Insulating panel made of sintered expanded polystyrene closed-cell foam, with preformed relief parts for pipe housing, combined with anti-collision polystyrene pre-formed sheet. Suitable panel to make circuits with a 50mm pitch and multiple circuits. Coupling with an overlap of the pre-formed foil on one side.

- Real size: 1350x850 mm
- Useful Dim. 1300x800 mm
- Usable floor area 1.04 m²
- Foil thickness 0.6 mm
- EPS 150
- Euroclass E

It is highly resistant to pressure from foot traffic. Applicable piping diameter: 14 to 17 mm.

Certifications:

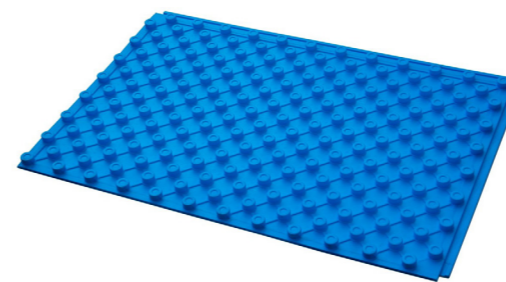
Compliant with UNI-EN 13163
- UNI 331 IIP certified - HBCD FREE



Compatible systems:

KILMA-ISI

Series 1938



Code	Useful Dim. (mm)	Insul. Th. (mm)	Pack m ²	Pallet m ²
1938.13.00	1223x823x33	10+3	19,20	76,80
1938.25.00	1223x823x60	15+10	13,44	53,76
1938.40.00	1223x823x45	30+10	9,60	38,40

Freight charges applicable on this product.

KILMA-BULL "Kilma-BULL" panel.

Insulating panel made of stamped sintered expanded polystyrene closed-cell foam, with pre-formed relief parts for pipe housing, combined with "PS" film. Grooves undercut spacing 50mm for the realisation of 50 mm multiple pitch circuits. Coupling possible by male/female peripheral interlocking joints.

- Real size: 1223x823 mm
- Net size: 1200x800 mm
- Usable floor area 0.96 m²
- EPS 200 (thickness 33 mm) - EPS 150 (thickness 45-60 mm)
- Euroclass E

Certifications:

Compliant with UNI-EN 13163 - UNI 331 IIP certified - CSTB 250-179 certified - HBCD FREE



Applicable piping diameter: 16 to 20 mm



Series 469

Fastener clip tool.

Easy to use tool for quick installation of the pipe fastener clip, code 468.45.00, 468.39.02, 1947.57.02 and 2003.42.02.

Code	Pack	Outer
469.00.02	1	1

Accessory to be used on the Kilma-Graf radiant system.

Freight charges applicable on this product.



Series 603

Bend former.

90° elbow, in polyamide F.V. used as a bend former as well as to protect the pipes close to their attachment to the manifold.

Code	Suitable for pipes	Pack	Outer
603.18.12	Ø 17	50	500
603.20.12	Ø 20	50	300
603.25.02	Ø 25	25	150

Accessory that can be used on Kilma-Isi, Kilma-Graf, Kilma-Rete, Kilma-Industriale and Kilma-Futura radiant systems.

Freight charges applicable on this product.



Series 667

Universal unwinder for pipe coils, made of galvanised box-section steel.

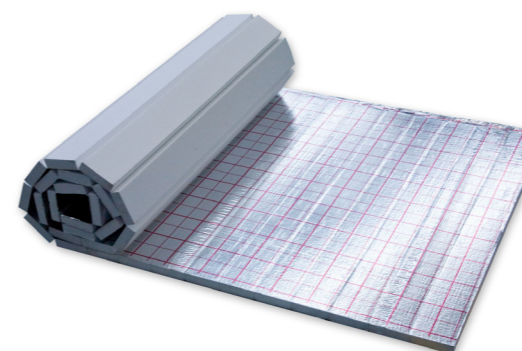
Easy and quick to assemble.

The coil, once resting on the scrolling surface, is unwound easily thanks to the ball bearing.

Code	Pack	Outer
667.00.00	1	1

Freight charges applicable on this product.

Series 1978



KILMA-ROLL

Code	Useful Dim. (mm)	Insul. Th. (mm)	Pack	Pack m ²	Pallet m ²
1978.20.02	1000x10000x20	20	1	10	70
1978.30.02	1000x10000x30	30	1	10	60
1978.40.02	1000x10000x40	40	1	10	50
1978.50.02	1000x10000x50	50	1	10	50

Freight charges applicable on this product.

"Kilma-ROLL" rolled panel.

Roll panel made of expanded polystyrene, bonded with reflective aluminised film, and featuring cross tracing with 50mm installation spacing. Can be combined with other panels by overlapping the reflective film on one side.

- Euroclass E

For head joints use anodised aluminium adhesive tape code 2018.00.02

Certifications:

HBCD FREE

Compatible systems:

KILMA-GRAF

KILMA-RETE



Series 1410.D



Compact polymer manifolds kit.

Each kit contains:
 n° 1 multi-way manifold unit complete with flow meters with lockshield and flow indicator function;
 n° 1 multi-way manifold unit complete with valves with thermostatic option with hand wheel;
 1 pair of plastic brackets for fixing manifolds;
 n° 2 1" ball valves with built-in thermometer 0 to 80 °C;
 n° 2 union fittings;
 1 x 1" air / water automatic discharge terminal unit;
 n° 1 manual 1" air / water discharge terminal unit.

- Temperature range 5 to 80 °C
- Max. operating pressure 8 Bar

Code	Measure	Ways	Pack
1410.06.20	1"	2+2	1
1411.06.20	1"	3+3	1
1412.06.20	1"	4+4	1
1413.06.20	1"	5+5	1
1414.06.20	1"	6+6	1
1415.06.20	1"	7+7	1
1416.06.20	1"	8+8	1
1417.06.20	1"	9+9	1
1418.06.20	1"	10+10	1
1419.06.20	1"	11+11	1
1420.06.20	1"	12+12	1
1420.13.20	1"	13+13	1
1420.14.20	1"	14+14	1

Centre distance connections through 50mm distribution -EUROCONUS G3/4" UNI-EN-ISO 228 threading



Manifold kit can be inserted in walls constructed in 8 cm box, plastered. Flow rate indicator flow meters on each supply way, air vent valves. Loose packaged components. Use Euroconus fittings with G3/4" thread for pipe connection.



Warning: branch pipe fittings tightened to max torque of 30Nm.

Series 1002.C



Kit for modular manifolds in anti-condensation polymer

Each kit contains:
 n° 1 multi-way manifold unit complete with flow meters with lockshield and flow indicator function;
 n° 1 multi-way manifold unit complete with valves with thermostatic option with hand wheel;
 1 pair of plastic brackets for fixing manifolds;
 n° 2 1" ball valves with built-in thermometer 0 to 80 °C;
 n° 2 union fittings;
 n° 1 automatic 1" air / water discharge terminal unit.
 n° 1 manual 1" air / water discharge terminal unit.

- Temperature range 5 to 80 °C
- Max. operating pressure 8 Bar

Code	Measure	Ways	Pack
1002.06.40	1"	2+2	1
1003.06.40	1"	3+3	1
1004.06.40	1"	4+4	1
1005.06.40	1"	5+5	1
1006.06.40	1"	6+6	1
1007.06.40	1"	7+7	1
1008.06.40	1"	8+8	1
1009.06.40	1"	9+9	1
1010.06.40	1"	10+10	1
1011.06.40	1"	11+11	1
1012.06.40	1"	12+12	1
1013.06.40	1"	13+13	1

Centre distance connections through 50mm distribution -EUROCONUS G3/4" UNI-EN-ISO 228 threading
 Patent nr. 262005



Supply indicator flow meters on each supply way. Manifolds with internal cavities with thermal insulation and anti-condensation functions. Use RBM fittings with G3/4" Euroconus thread for pipe connection (217M.A and 224M.A series)



Warning: branch pipe fittings tightened to max torque of 30Nm.

Series 217.B

Polyethylene pipe fitting.

Euroconus G3/4" connection (UNI-EN-ISO 228)

Certifications:



Code	Measure	Measure	Pack	Outer
217.16.00	16x2	G 3/4" 16 EK	10	100
217.17.00	17x2	G 3/4" 17 EK	10	100
217.20.00	20x2	G 3/4" 20 EK	10	100

Size: Outside Ø x pipe thickness



Series 224.B

Compression fitting for multilayer pipe.

Euroconus G3/4" connection (UNI-EN-ISO 228)

Certifications:



Code	Measure	Measure	Pack	Outer
224.16.00	16x2	G 3/4" 16 EK	10	100
224.20.00	20x2	G 3/4" 20 EK	10	100

Size: Outside Ø x pipe thickness



Series 208

Flow meter to measure the flow rate of single circuit directly.

Euroconus F threaded swivel connection for connection to manifold.
 Euroconus M threaded straight connection for fittings for copper, polyethylene, multilayer pipe.

- Scale 0 to 5 l/min
- Reading precision ±10%

Code	Measure	Pack	Outer
208.05.10	G3/4" EK	10	10



Adjustable Manifold Stand

Suitable for RBM Series 1410.D & 1002.C manifold assemblies.

Code	Pack	Outer
RBMS-21-0066	1	1



Freight charges applicable on this product.



Series 306

Thermo-electrically controlled servo motor for valve with thermostatic option, complete with valve body clamping ring nut and electric power cable.

Normally closed valve position when power missing.

- Power supply 24/230V
- Consumption 2.5W
- Frequency 50/60 Hz
- IP54 protection rating
- Operating temperature -5 to +50 °C
- 4 mm stroke
- Switch contact rating (0.5A) 1 A (if any)

Certifications:



Thermo-electrically controlled actuator

Code	Power supply	Pack
306.00.02	230V AC	1
306.00.12	24V AC	1

Version without auxiliary microswitch (2 wires)

Thermo-electrically controlled actuator with auxiliary microswitch

Code	Power supply	Pack
306.00.42	230V AC	1
306.00.52	24V AC	1

Version supplied with auxiliary microswitch (4 wires)

Info icon: Servo control that can be matched with SERIES 608 - 2028 - 1410 - 1002 - 279 manifolds with a 50 mm centre distance, and Kilma-Zone SERIES 3615 - 3616 manifolds





Series 1531.A

KILMA-ECO-RF-AT Polymer Fixed Point mixing unit Kilma-ECONBLOCK RF-AT series in Polymer.

Mixing and distribution unit for low and high temperature circuits, comprised of: H.T. manifold, circulation pump, mixing manifold, including non-return valve and control return unit; fixed value adjustment using injection valve with thermostatic head with internal probe (low temperature delivery), immersed safety thermostat.

- System side connection centre distance 111 mm, G 3/4" ball valve connections.
- Centre distance between outlet connections for high temperature 37 mm, Standard threaded RBM connections

Code	Pump	Pack
1531.06.71	Para 15/7 SC 130	1

high performance adjustable flow pump EEI<0.23 - ERP 622/2012



Use fittings with Standard RBM thread to connect the pipe to the H.T. manifold.
Minimum recessed depth of the accessory containment metal case 130 mm.



Warning: branch pipe fittings tightened to max torque of 30Nm.



Freight charges applicable on this product.



Series 1531.B

KILMA-ECO-RF Polymer Fixed Point mixing unit Kilma-ECONBLOCK RF series in Polymer.

Mixing and distribution unit for low temperature circuits, comprised of: circulation pump, mixing manifold, including non-return valve and control return unit; fixed value adjustment using injection valve with thermostatic head with internal probe (low temperature delivery), immersed safety thermostat.

- System side connection centre distance 111 mm, G 1/2" M connections.

Code	Pump	Pack
1531.06.51	Para 15/7 SC 130	1

high performance adjustable flow pump EEI<0.23 - ERP 622/2012



Minimum recessed depth of the accessory containment metal case 130 mm.



Freight charges applicable on this product.



Series 3523

Kilma-ECOMIX RF series Fixed Point mixing unit.

Mixing and distribution unit for low temperature circuits consisting of: circulation pump and thermostatic mixer.

- G 1" M system side connections.

ECOMIX RF 50 mixing unit

Code	Pump	Pack
3523.06.51	Para 15/7 SC 130	1

high performance adjustable flow pump EEI<0.23 - ERP 622/2012
To be matched to manifolds with a 50 mm centre distance

ECOMIX RF 37 mixing unit

Code	Pump	Pack
3523.06.37	Para 15/7 SC 130	1

high performance adjustable flow pump EEI<0.23 - ERP 622/2012
To be matched to manifolds with a 37 mm centre distance (series 3615 and 3202)



Minimum recessed depth of the accessory containment metal case 130 mm.



Freight charges applicable on this product.



Series 3195

Multimix Multimix booster unit.

Wall-mounted hydraulic manifold for 2 or 3 zones for heating/cooling systems.
Black water-painted steel body.
Module supplied complete with EPP insulation casing (density 60 g/l) serving as casing and wall support of the whole mixing and booster unit.
Manifold can be transformed, as needed, into manifold/hydraulic separator by the manual opening of a shutter on the manifold (supplied in manifold/separator configuration).

1" M threaded connections from the heat generator. Connections on the user side with 1"1/2 F threaded unions.

Connection set-up for 3/4" F safety unit (delivery) and connection for 3/4" F expansion tank (return).
Manifold can be coupled to RD25 - RF MIX25 - RM MIX25 modules.

- Maximum operating pressure 6 bar
- Maximum operating temperature 110 °C
- Minimum cooling temperature 7 °C
- Size lxhxp: 402x525x250 mm (2 branches) - 555x525x250 mm (3 branches)

Code	Measure	Ways	Pack
3195.06.02	DN 25	2	1
3196.06.02	DN 25	3	1



Freight charges applicable on this product.



Series 3197

RD RD Direct booster unit.

High temperature unit for heating/cooling systems complete with:

- High efficiency circulator model model Wilo Yonos Para 25/6;
- 2 shut-off ball valves on system delivery and return with built-in thermometer - 1" F connection;
- Check valve built into system return ball valve, can be excluded for counter washing.

- Maximum operating pressure 6 bar
- Maximum operating temperature 110 °C
- Minimum cooling temperature 7 °C

Code	Measure	Pack
3197.06.02	DN 25	1



Freight charges applicable on this product.



Series 3198

RF MIX mixing unit.

Fixed point mixed unit for heating only systems, complete with:

- 3-way mixer valve and thermostatic actuator;
- Safety contact thermostat on supply pipe (only model RF MIX B.T.);
- High efficiency circulator model model Wilo Yonos Para 25/6;
- 2 shut-off ball valves on system delivery and return with built-in thermometer - 1" F connection;
- Check valve built into system return ball valve, can be excluded for counter washing.

- Maximum operating pressure 6 bar
- Maximum operating temperature 110 °C

RF MIX B.T. - Low Temperature Fixed Point Booster

Code	Measure	Pack
3198.06.00	DN 25	1

Supply inclusive of thermostatic head model TL50.
Temperature adjustment range 25 to 52 °C

RF MIX A.T. - High Temperature Fixed Point Booster

Code	Measure	Pack
3198.06.10	DN 25	1

Supply inclusive of thermostatic head model TL70S.
Temperature range 40 to 70 °C



Kit components (booster module and thermostatic head) supplied in 2 separate packages.



Freight charges applicable on this product.





Series 3199

RM MIX RM MIX mixing unit.

Mixed unit designed for shifting temperature for heating/cooling systems, complete with:

- 3-way mixer valve (Actuator to couple separately depending on electronic temperature control chosen - see range of actuators);
- High efficiency circulator model model Wilo Yonos Para 25/6;
- 2 shut-off ball valves on system delivery and return with built-in thermometer - 1" F connection;
- Check valve built into system return ball valve, can be excluded for counter washing.
- Maximum operating pressure 6 bar
- Maximum operating temperature 110 °C
- Minimum cooling temperature 7 °C

Code	Measure	Pack
3199.06.02	DN 25	1

Optional actuator series 3232 and 3233 to be ordered separately depending on the electronic temperature control chosen.

Freight charges applicable on this product.



Series 3219

Multimix S32 Hydraulic separator MULTIMIX S32.

Hydraulic separator with 1 1/2" M threaded connections, body made of galvanised steel (Fe 37.1) colour RAL 9004, complete with polyurethane foam insulation covered with aluminium sheet. Complete with set-up for:

- Air vent 1/2" F connection (unplugged when supplied - any plug to be provided by the installer);
- 1/2" F safety unit connection (unplugged when supplied - any plug to be provided by the installer);
- System sludge drain (2" F hole complete with plug when supplied and positioned on the opposite side of the separator with respect to the manifold);
- 1" 1/4 F threaded blind hole on the bottom for fastening the support foot (foot not included).

- Qn max 6.5 m³/h
- Maximum operating pressure 6 bar
- Maximum operating temperature 120 °C

Code	Measure	Pack
3219.07.02	DN 40	1

Freight charges applicable on this product.



Series 3222

Insulated pipe kit to connect Multimix S32 vertical separator and Multimix C32 zone manifold.

Pipes supplied complete with 2 1 1/2" x 2" reducing couplings for connection on Multimix S32 hydraulic separator side.

- Qn max 6.5 m³/h
- Maximum operating pressure 6 bar
- Maximum operating temperature 100 °C
- Capacity 4.8 l

Code	Measure	Ways	Pack
3222.07.02	DN 32	2 - 3	1
3222.07.12	DN 32	4 - 5	1

Freight charges applicable on this product.



Series 3223

Multimix C32 Multimix C32 zone manifold.

Wall-mounted zone manifolds with double chamber for 2, 3, 4 and 5 zones for heating/cooling systems.

2" M threaded connections from the heat generator - centre distance 125 mm, connections to the areas with 2" F threaded fittings - centre distance 125 mm.

Steel body in black water paint (ST37.1 - RAL 9004), complete with black EPP insulation (density 40 g/l). Square profile manifold.

Supply chamber equal to Ø52 mm (for DN50). Return chamber equal to Ø41 mm (for DN40).

1" F connection for safety unit (delivery). 3/4" F connection for expansion tank (return).

Possibility of screwing mixing units set up for metering RD25 CONT, RF25 CONT and RM25 CONT by means of specific reductions code 3237.06.02

- Maximum power 120 kW (Δt 20 °C)
- Maximum operating pressure 6 bar
- Maximum operating temperature 120 °C
- Minimum operating temperature 7 °C

Code	Measure	Ways	Pack
3223.07.02	DN 32	2	1
3224.07.02	DN 32	3	1
3225.07.02	DN 32	4	1
3226.07.02	DN 32	5	1

Freight charges applicable on this product.





Series 3227

Wall support kit for Multimix C32 zone manifold.

Code	Pack
3227.00.02	1

Freight charges applicable on this product.



Series 3228

RD32
RD32 Direct booster unit.

High temperature unit for heating/cooling systems complete with:

- High efficiency circulator, model Wilo Yonos Para 30/1-6;
- Ball valve with thermometer on system supply and return line;
- Spacer fitting with check valve;
- Black EPP insulation (density 40 g/l).

Maximum flow rate 3000 l/h
Maximum power ($\Delta t = 20^\circ\text{C}$) 69,7 KW
DN32 - 1"1/4 nominal diameter
Brass ball valves
Check valve in acetalic resin (POM)
Elastomer gaskets
1"1/4 F x 2" M connections

- Maximum operating pressure 6 bar
- Maximum operating temperature 120 °C
- Minimum cooling temperature 11 °C

Code	Measure	Pack
3228.07.02	DN 32	1

Freight charges applicable on this product.



Series 3229

RM MIX32
RM MIX32 mixing unit.

Mixing unit for heating/cooling system complete with:

- 3-way mixer valve (Actuator to couple separately according to temperature control chosen - see range of actuators);
- High efficiency circulator, model Wilo Yonos Para 30/1-6;
- Ball valve with thermometer on system supply and return line;
- Spacer fitting with check valve;
- Black EPP insulation (density 40 g/l).

Maximum flow rate 2400 l/h
Maximum power ($\Delta t = 20^\circ\text{C}$) 41.3 kW
DN32 - 1"1/4 nominal diameter
Brass ball valves
Check valve in acetalic resin (POM)
Elastomer gaskets
1"1/4 F x 2" M connections

- Maximum operating pressure 6 bar
- Maximum operating temperature 120 °C
- Minimum cooling temperature 11 °C

Code	Measure	Pack
3229.07.02	DN 32	1

Optional actuator series 3232 and 3233 to be ordered separately depending on the electronic temperature control chosen.

Freight charges applicable on this product.



Series 3234

RD25 CONT
Direct booster unit, set up for heat metering, RD25 CONT.

High temperature unit for heating/cooling systems complete with:

- High efficiency circulator, model Wilo Yonos Para 25/1-6;
- 2 1" F ball valves on system delivery and return, each complete with thermometer;
- Check valve built into the system return ball valve (can be excluded for counter washing);
- 1" - L 130 mm polymer template on system return line for future calorimeter installation with nQ 2.5 m³/h /Microclima HC25 model (various models available);
- Delivery probe holder well for calorimeter;
- Insulation in black EPP (density 40 g/l).

Nominal diameter: DN25 - 1"
Brass ball valves
Check valve in acetalic resin (POM)
Elastomer gaskets
1" F x 1"1/2 M connections

- Maximum operating pressure 6 bar
- Maximum operating temperature 120 °C

Code	Measure	Pack
3234.06.02	DN 25	1

Unit set up for installation on Multimix C32 series 3223 central manifold

For installation on DN32 manifold, provide specific reduction code 3237.06.02

Freight charges applicable on this product.



Series 3235

Fixed point booster unit, set up for heat metering RF25 CONT.

Fixed point mixed unit for heating only systems, complete with:

- High efficiency circulator, model Wilo Yonos Para 25/1-6;
- 3-way mixer valve equipped with upper bypass (mixed system side) and thermostatic actuator;
- Safety contact thermostat on supply pipe (only model RF MIX B.T.)
- Polymer template on system 1" - L 130 mm return line for future calorimeter installation with nQ 2.5 m³/h /Microclima HC25 model (various models available);
- Delivery probe holder well for calorimeter;
- Insulation in black EPP (density 40 g/l).

Nominal diameter: DN25 - 1"
Brass ball valves
Acetal resin (POM) check valve
Elastomer gaskets
1" F x 1"1/2 M connections

- Maximum operating pressure 6 bar
- Maximum operating temperature 120 °C

RF25 CONT B.T. - Low Temperature Fixed Point Booster designed for metering purposes

Code	Measure	Pack
3235.06.00	DN 25	1

Supply inclusive of thermostatic head model TL50.
Temperature adjustment range 25 to 52 °C

RF25 CONT A.T. High Temperature Fixed Point Booster designed for metering purposes

Code	Measure	Pack
3235.06.10	DN 25	1

Supply inclusive of thermostatic head model TL70S.
Temperature range 40 to 70 °C

Unit set up for installation on Multimix C32 series 3223 central manifold

For installation on DN32 manifold, provide specific reduction code 3237.06.02
Kit components (booster module and thermostatic head) supplied in 2 separate packages.

Freight charges applicable on this product.





Series 3236

RM25 CONT Climatic booster unit, set up for heat metering.

Mixing unit with shifting temperature or heating/cooling systems, complete with:

- High efficiency circulator, model Wilo Yonos Para 25/1-6;
- 3-way mixer valve (Actuator to couple separately according to temperature control chosen - see range of actuators);
- 1" polymer template on system - L 130 mm return line for future calorimeter installation with nQ 2.5 m³/h / Microclima HC25 model (various models available);
- Delivery probe holder well for calorimeter;
- Insulation in black EPP (density 40 g/l).

Nominal diameter: DN25 - 1"
Brass ball valves
Acetal resin (POM) check valve
Elastomer gaskets
1" F x 1 1/2" M connections

- Maximum operating pressure 6 bar
- Maximum operating temperature 120 °C

Code	Pack
3236.06.02	1



Unit set up for installation on Multimix C32 series 3223 central manifold



For installation on DN32 manifold, provide specific reduction code 3237.06.02
Optional actuator series 3232 and 3233 to be ordered separately depending on the electronic temperature control chosen.



Freight charges applicable on this product.



Series 3856

SmartFiller 1/2" Adjustable insulation shell to refill closed circuits, diaphragm operated, complete with self-lubricating technopolymer cartridge, built-in check valve, graduated calibration knob and dial pressure gauge to view downstream pressure.

Brass body.
Stainless steel sealing ring.
Elastomer seals.
Threaded connections MF UNI-EN-ISO 228.

- Nominal pressure 16 Bar
- Max upstream pressure 16 Bar
- Adjustable downstream pressure 0.5 to 4 Bar
- Max operating temperature 80 °C
- Pressure gauge scale 0 to 4 Bar
- Filtering grade 500 µm

Code	Measure	Pack	Outer
3856.04.00	G 1/2"	1	6
3856.04.90*	G 1/2"	1	6

*Version supplied without pressure gauge



Series 47

Safety Unit.

Consisting of:

- Automatic air vent valve + check valve
- Standard safety valve with controlled increase with discharge F G1/2"
- Pressure gauge dial with radial connection + check valve

Valve pressure setting 3 bar
Max operating temperature 90 °C
Pressure gauge scale 0 - 6 Bar
S.V. orifice diameter 15 mm
Max capacity 75 Kw

Code	Measure	Pack	Outer
47.06.10	1"	1	4



Series 4093

Zerofrost Antifreeze valve for heat pumps

Brass body.
Brass internal components.
EPDM PEROX seals.
Stainless steel AISI 302 springs.

- Compatible fluid: water
- Max operating pressure 10 Bar
- Temperature range 0÷80°C
- Fluid temperature (open) 3° C
- Fluid temperature (closed) 4° C
- Sensitivity ± 1° C
- Max discharge flow rate at 3 bar: 1.5 l/h

Code	Measure	Kv (m ³ /h)	Pack
4093.06.00	1"	55	1
4093.07.00	G 1 1/4"	70	1



Series 124

Settable by-pass valve for total or partial overflow of thermal circuits.

Brass body.
Elastomer seals.
Stainless steel AISI 302 springs.
Shockproof ABS handwheel.
Graduated scale on knob.
Threaded angle connections UNI-EN-ISO 228 (3/4" - 1" - 1 1/4).

- Max operating temperature 110 °C
- Max operating pressure 10 Bar
- Setting range 0.1 to 0.7 Bar
- Setting unit 0.1 Bar

Code	Measure	Pack	Outer
124.05.00	G 3/4"	1	10
124.06.00	G 1"	1	10
124.07.00	G 1 1/4"	1	5

*Connections for steel pipe with union fitting





Zilmet Cal-Pro

Expansion Vessels for Heating
The CAL-PRO expansion vessels absorb the water volume variations in a closed heating system. The broad range available meets the requirements of various heating systems sizes.

Crimped or welded carbon steel shells, synthetic SBR rubber according to DIN 4807-3 norms are suitable to every capacity for maximizing tank drawdown. Vessels are painted externally with long-lasting epoxy-polyester powder coating and are 100% factory-tested.

- Max operating temperature 99 °C
- Shell: Carbon Steel
- Connections: Carbon Steel
- Colour: Red

Code	Capacity	Max. Working Pressure	Factory Pre-Charge Pressure
ZIL-130000400	4 L	5 Bar	1.5 Bar
ZIL-130000800	8 L	5 Bar	1.5 Bar
ZIL-130001200	12 L	4 Bar	1.5 Bar
ZIL-130001800	18 L	4 Bar	1.5 Bar
ZIL-130002500	25 L	4 Bar	1.5 Bar
ZIL-130003500	35 L	4 Bar	1.5 Bar
ZIL-130003503	35 L	4 Bar	1.5 Bar
ZIL-130005000	50 L	4 Bar	1.5 Bar
ZIL-130005003	50 L	4 Bar	1.5 Bar
ZIL-130008000	80 L	6 Bar	2 Bar
ZIL-130010500	105 L	6 Bar	2 Bar
ZIL-130015000	150 L	6 Bar	2 Bar
ZIL-130020000	200 L	6 Bar	2.5 Bar
ZIL-130025000	250 L	6 Bar	2.5 Bar
ZIL-130030000	300 L	6 Bar	2.5 Bar
ZIL-130040000	400 L	6 Bar	2.5 Bar
ZIL-130050000	500 L	6 Bar	2.5 Bar
ZIL-130060000	600 L	6 Bar	2.5 Bar

Freight charges applicable on this product.



Series 351

Standard safety relief valve with controlled rise for fluids and neutral gases.

Brass body.
Stainless steel AISI 302 spring.
Elastomer obturator seal.
Elastomer diaphragm.
Threaded angle connections FF UNI-EN-ISO 228.

- Maximum admissible pressure PS 10 bar
- Max operating temperature 110 °C
- Orifice diameter 15mm
- Opening overpressure <20% Pt
- Closing discard pressure -20%
- Allowed fluid water-air (Gr.2)

Standard safety relief valve 1/2" x 1/2" female connection

Code	Calibration (bar)	Max. Pwr. (kW)	Pack	Outer
351.04.10	1,50	48	1	50
351.04.20	2,00	55	1	50
351.04.30	2,50	68	1	50
351.04.40	3,00	75	1	50
351.04.50	3,50	83	1	50
351.04.60	4,00	96	1	50
351.04.70	4,50	103	1	50
351.04.80	5,00	109	1	50
351.04.90	6,00	128	1	50
351.04.71	7,00	148	1	50
351.04.81	8,00	166	1	50
351.04.11	10,00	181	1	50

Standard safety relief valve 3/4" x 3/4" female connection

Code	Calibration (bar)	Max. Pwr. (kW)	Pack	Outer
351.05.10	1,50	48	1	50
351.05.20	2,00	55	1	50
351.05.30	2,50	68	1	50
351.05.40	3,00	75	1	50
351.05.50	3,50	83	1	50
351.05.60	4,00	96	1	50
351.05.70	4,50	103	1	50
351.05.80	5,00	109	1	50
351.05.90	6,00	128	1	50
351.05.71	7,00	148	1	50
351.05.81	8,00	166	1	50
351.05.11	10,00	181	1	50



Zilmet Ultra-Pro

Expansion Vessels for Water Supply
ULTRA-PRO pressure tanks are the best choice for irrigation pumps, centrifugal pumps, submersible pumps and for booster sets. The actual capacity of a bladder tank is bigger than the capacity of common storage tanks: the same performance can be obtained with a smaller volume, still granting minimum pump's starts and thus saving energy.

Our pressure tanks undergo a 100% factory testing procedure and are certified according to the PED 2014/68/EU.

ULTRA-PRO pressure tanks may ensure unlimited service as their bladder is easily replaceable.

- Max operating temperature 99 °C
- Shell: Carbon Steel
- Connections: Galvanised / Stainless Steel
- Colour: Blue

Code	Capacity	Max. Working Pressure	Factory Pre-Charge Pressure
ZIL-110002418	24 L	10 Bar	1.5 Bar
ZIL-110005004	50 L	10 Bar	1.5 Bar
ZIL-1100010004	100 L	10 Bar	1.5 Bar
ZIL-1100020004	200 L	10 Bar	1.5 Bar
ZIL-1100030004	300 L	10 Bar	1.5 Bar
ZIL-1100050004	500 L	10 Bar	1.5 Bar
ZIL-1100075056	750 L	10 Bar	1.5 Bar
ZIL-1100100055	1,000 L	10 Bar	1.5 Bar

Freight charges applicable on this product.



Series 353

Standard safety relief valve with controlled rise for fluids and neutral gases, complete with dial pressure gauge.

Brass body.
Stainless steel AISI 302 spring.
Elastomer obturator seal.
Elastomer diaphragm.
Threaded angle connections FF UNI-EN-ISO 228.
F1/4" pressure gauge connection (UNI-EN-ISO 228).

- Maximum admissible pressure PS 10 bar
- Max operating temperature 110 °C
- Orifice diameter 15mm
- Opening overpressure <20% Pt
- Closing discard pressure -20%
- Pressure gauge scale 0 to 4 Bar for valves < 4 Bar
- Pressure gauge scale 0 - 10 bar for valves > 4 bar
- Permitted fluid water-air (Un.2)

Standard safety relief valve 1/2" x 1/2" female connection with pressure gauge

Code	Calibration (bar)	Max. Pwr. (kW)	Pack	Outer
353.04.10	1,50	48	1	48
353.04.20	2,00	55	1	48
353.04.30	2,50	68	1	48
353.04.40	3,00	75	1	48
353.04.50	3,50	83	1	48
353.04.60	4,00	96	1	48
353.04.70	4,50	103	1	48
353.04.80	5,00	109	1	48
353.04.90	6,00	128	1	48
353.04.71	7,00	148	1	48
353.04.81	8,00	166	1	48
353.04.11	10,00	181	1	48

Standard safety relief valve 3/4" x 3/4" female connection with pressure gauge

Code	Calibration (bar)	Max. Pwr. (kW)	Pack	Outer
353.05.10	1,50	48	1	48
353.05.20	2,00	55	1	48
353.05.30	2,50	68	1	48
353.05.40	3,00	75	1	48
353.05.50	3,50	83	1	48
353.05.60	4,00	96	1	48
353.05.70	4,50	103	1	48
353.05.80	5,00	109	1	48
353.05.90	6,00	128	1	48
353.05.71	7,00	148	1	48
353.05.81	8,00	166	1	48
353.05.11	10,00	181	1	48



Zilmet Wall Mount Bracket

Wall Bracket to suit tanks up to 24L

Code
RBMS-21-0017

Freight charges applicable on this product.



Series 38

Check valve for the automatic shut-off of air vent valves, models Vasa, Miniluft and Megaluft.

Brass body.
Elastomer seals.
Threaded connections MF UNI-EN-ISO 228.

- Max operating pressure 6 Bar (without air venting valve)
- Max operating temperature 100 °C

Check valve with pre-treated threading

Code	Size A	Size B	Pack
3829.03.70	G 3/8" F	G 3/8" M	10
3829.04.70	G 3/8" F	G 1/2" M	10
38.04.50	G 1/2" F	G 1/2" M	10



Series 791

Miniluft CP

Compact automatic air vent valve for small and medium circuits, complete with manual locking pawl and check valve for automatic shut-off. Float operation.

Polymer body. Polymer cap unit.
Float in PP.
Stainless steel AISI 302 spring.
Elastomer seals.
Threaded connection M UNI-EN-ISO 228.

- Max operating pressure 6 Bar
- Max nominal pressure tolerable 10 Bar
- Max operating discharge pressure 4 Bar
- Max operating temperature 100 °C
- Allowed fluid water and water+glycol 30 %

Features:



Series 2827.A

Miniluft Compact

Compact automatic air vent valve for smaller systems, complete with manual locking pawl. Lateral discharge. Float operation.

Brass body. Polymer cap unit.
Float in PP.
Stainless steel AISI 302 spring.
Elastomer seals.
Polymer air pocket breaker
Threaded connection M UNI-EN-ISO 228.

- Max operating pressure 10 Bar
- Max operating discharge pressure 4 Bar
- Max operating temperature 115 °C
- Allowed fluid water and water+glycol 30 %

Features:



Code	Measure	Model	Pack
791.03.40	G 3/8"	Miniluft CP	1
791.04.40	G 1/2"	Miniluft CP	1

*Valve fitted with air pocket breaker

Code	Measure	Model	Pack
2827.03.10*	G 3/8"	Miniluft Compact	1
2827.04.00	G 1/2"	Miniluft Compact	1



Series 2828

Miniluft

Compact automatic air vent valve for smaller systems, complete with manual locking pawl. Vertical discharge. Float operation.

Brass body. Polymer cap unit.
Float in PP.
Stainless steel AISI 302 spring.
Elastomer seals.
Polymer air pocket breaker
Threaded connection M UNI-EN-ISO 228.

- Max operating pressure 10 Bar
- Max operating discharge pressure 6 Bar
- Max operating temperature 115 °C
- Allowed fluid water and water+glycol 30 %

Features:



Code	Measure	Model	Pack
2828.03.10*	G 3/8"	Miniluft	1
2828.04.00	G 1/2"	Miniluft	1

*Valve fitted with air pocket breaker



Series 3574

Miniluft HP

Automatic high-performance air vent valve with manual locking pawl. Vertical discharge. Float operation.

Brass bottom and cap.
Float in PP.
Stainless steel AISI 302 spring.
Elastomer seals.
Threaded connection M UNI-EN-ISO 228.

- Max operating pressure 10 Bar
- Max operating discharge pressure 8 Bar
- Max operating temperature 115 °C
- Allowed fluid water and water+glycol 30 %

Features:



Code	Measure	Model	Pack
3574.03.00	G 3/8"	Miniluft HP	1
3574.04.00	G 1/2"	Miniluft HP	1
3574.05.00	G 3/4"	Miniluft HP	1



Series 2836

Megaluft HP

Deaerator with high discharge capacity. Float operation.

Brass body.
Float and lever in PP.
Stainless steel AISI 302 spring.
Elastomer seals.
Threaded connection M UNI-EN-ISO 228.

- Max operating pressure 10 Bar
- Max operating discharge pressure 10 Bar
- Max operating temperature 115 °C
- Allowed fluid water and water+glycol 30 %

Features:



Code	Measure	Model	Pack
2836.04.00	G 1/2"	Megaluft HP	1





Series 2830.A

Airterm Line deaerator. Float operated.

Brass body.
Float and lever in PP.
Stainless steel AISI 302 spring.
Stainless steel 304 3Layers cartridge.
Elastomer seals.
Threaded connections F UNI-EN-ISO 228.

- Max operating pressure 10 Bar
- Max operating discharge pressure 10 Bar
- Max operating temperature 110 °C
- Allowed fluid water and water+glycol 30 %

Features:



Code	Measure	Model	Pack
2830.04.00	G 1/2"	Airterm	1
2830.05.00	G 3/4"	Airterm	1
2830.06.00	G 1"	Airterm	1
2830.07.00	G 1"1/4	Airterm	1
2830.08.00	G 1"1/2	Airterm	1
2830.09.00	G 2"	Airterm	1



Series 2830.B

Airterm Flanged in-line deaerator. Float operation.

Painted steel body.
Valve body and brass degasser.
Elastomer degasser seals.
PN16 flanged connections.

- Max operating pressure 10 Bar
- Max operating discharge pressure 10 Bar
- Max operating temperature 110 °C
- Allowed fluid water and water+glycol 30 %

Code	Measure	Model	Pack
2830.09.72	DN 50	Airterm	1
2830.10.72	DN 65	Airterm	1
2830.11.72	DN 80	Airterm	1
2830.13.72	DN 100	Airterm	1
2830.14.72	DN 125	Airterm	1
2830.15.72	DN 150	Airterm	1



Series 2829.A

Dirterm Self-cleaning dirt separator. Complete with drain ball cock with hose connection.

Brass body.
Stainless steel AISI 304 3 Layers filtering cartridge.
Elastomer hydraulic seals.
Threaded connections FF UNI-EN-ISO 228.

- Max operating pressure 10 Bar
- Operating temperature 0 to +110 °C

Code	Measure	Kv (m³/h)	Pack
2829.04.00	G 1/2"	7,40	1
2829.05.00	G 3/4"	12,66	1
2829.06.00	G 1"	20,44	1
2829.07.00	G 1"1/4	28,14	1
2829.08.00	G 1"1/2	44,45	1
2829.09.00	G 2"	65,58	1



Series 2831.A

Airterm Dirt Self-cleaning dirt separator / deaerator. Float operated deaerator. Complete with drain ball cock with hose connection.

Brass body.
Lever floating device in PP.
Stainless steel AISI 304 3 Layers filtering cartridge.
Elastomer hydraulic seals.
Threaded connections FF UNI-EN-ISO 228.

- Max operating pressure 10 Bar
- Max operating discharge pressure 10 Bar
- Operating temperature 0 to +110 °C

Code	Measure	Kv (m³/h)	Pack
2831.04.00	G 1/2"	7,40	1
2831.05.00	G 3/4"	12,66	1
2831.06.00	G 1"	20,44	1
2831.07.00	G 1"1/4	28,14	1



Series 2831.B

Airterm Dirt Self-cleaning dirt separator/ flanged deaerator. Float operation.

Painted steel body.
Valve body and brass degasser.
Elastomer degasser seals.
PN16 flanged connections.

- Max operating pressure 10 Bar
- Max operating discharge pressure 10 Bar
- Max operating temperature 110 °C
- Allowed fluid water and water+glycol 30 %

Code	Measure	Pack
2831.09.72	DN 50	1
2831.10.72	DN 65	1
2831.11.72	DN 80	1
2831.13.72	DN 100	1
2831.14.72	DN 125	1
2831.15.72	DN 150	1





Series 617.A

Threaded, pre-dimensioned hydraulic separator.

Painted steel body.
Valves and degasser are made of brass.
PTFE ball valves seals.
Elastomer degasser seals.
Threaded union connections F UNI-EN-ISO 228.
Front connection for 1/2" F UNI-EN-ISO 228 accessories.

Max operating pressure:

- Separator body 10 Bar
- Ball valve 25 Bar
- Degasser 10 Bar

Allowed temperatures:

- Degasser 0 to +115 °C
- Ball valve -15 to +120 °C

Code	Measure	Flow rate (l/h)	Pack
617.06.12	1"	2.500	1
617.07.12	1"1/4	4.000	1
617.08.12	1"1/2	6.000	1
617.09.12	2"	8.500	1



Supplied complete with MEGALUFT degasser, ball valve to discharge bottom and mud drainage and thermal insulation shell.



Series 617.B

Flanged, pre-dimensioned hydraulic separator.

Painted steel body.
Valves and degasser are made of brass.
PTFE ball valves seals.
Elastomer degasser seals.
PN16 flanged connections.
Connection for 1/2" F UNI-EN-ISO 228 accessories.

Max operating pressure:

- Separator body 10 Bar
- Ball valve 25 Bar
- Degasser 10 Bar

Allowed temperatures:

- Degasser 0 to +115 °C
- Ball valve -15 to +120 °C

Code	Measure	Flow rate (l/h)	Pack
617.09.72	DN 50	9.000	1
617.10.72	DN 65	18.000	1
617.11.72	DN 80	28.000	1
617.13.72	DN 100	56.000	1
617.14.72	DN 125	75.000	1
617.15.72	DN 150	110.000	1



Supplied complete with MEGALUFT degasser, ball valve to discharge bottom and mud drainage and thermal insulation shell.
Flange suitable for coupling with counter-flange UNI EN 1092-1.

Series 3715.A

Code	Measure	Kv (m ³ /h)	Pack	Outer
3715.05.10	G 3/4"	4,65	1	6

Patented



Super compact.
Shut-off system included.
Triple filtration.
High efficiency.
Removes any impurity.
Fights corrosion.
Increases the lifespan of the boiler.
Maintains optimum system efficiency.

Features:



MG2

Under-boiler magnetic sludge remover filter.

Plastic polymer cartridge holder body.
Stainless steel AISI 304 filtering cartridge.
Elastomer hydraulic seals.
Threaded connections MF UNI-EN-ISO 228.

- Max operating pressure 3 Bar
- Operating temperature 0 to 90° C
- Neodymium magnet
- Filtering grade 800 µm



Series 3070.A

MG1

Under-boiler magnetic sludge remover filter. Supplied complete with swivel filter/boiler connection fitting and ball valve.

Plastic polymer cartridge holder body.
Stainless steel AISI 304 filtering cartridge.
Elastomer hydraulic seals.
Threaded connections MF UNI-EN-ISO 228.

- Max operating pressure 3 Bar
- Operating temperature 0 to +90 °C
- Neodymium magnet B = 11000 gauss
- B(T max) / B(T amb)* < 1%
- *T max = 130 °C - T amb = 21 °C
- Filtering grade 800 µm

Features:



Code	Measure	Kv (m ³ /h)	Pack	Outer
3070.05.00	G 3/4"	5,49	1	6

Patent nr. 202015000064159





Series 3699

MP1
Self-cleaning magnetic sludge remover filter for hydronic heat pump.

Complete with integrated shut-off device and discharge ball cock.

Body in plastic polymer.
AISI 304 stainless steel reinforced filtering cartridge.
Elastomer hydraulic seals.
Threaded connections MM UNI-EN-ISO 228.

- Max operating pressure 6 Bar
- Operating temperature 0 - +70 °C
- Neodymium magnet B = 11000 gauss
- Filtering grade 800 µm

Features:



Code	Measure	Kv (m³/h)	Pack
3699.06.00	G 1"	17.3	1
3699.07.00	G 1 1/4"	17.3	1



Series 3833

MP2
Self-cleaning magnetic sludge remover filter for hydronic heat pump.

Brass diverter valve body.
Plastic polymer cartridge holder body.
Stainless steel AISI 304 filtering cartridge.
Elastomer hydraulic seals.
Threaded connections FF UNI-EN-ISO 228.

- Max operating pressure 6 Bar
- Operating temperature 0-70 °C
- Neodymium magnet B = 11000 gauss
- Filtering grade 800 µm

Features:



Code	Measure	Kv (m³/h)	Pack
3833.06.00	G 1"	10,73	1

Patented

HEAT PUMPS MAGNETIC FILTRATION



MP1
Series 3699
Measures:
1" - 1 1/4"



MP2
Series 3833
Measures:
1"



Series 2405

SafeCleaner2
Multifunction polymer magnetic dirt separator, diverter in brass, FF connection.

Plastic polymer cartridge holder body.
Nickel plated brass diverter valve.
Stainless steel AISI 304 filtering cartridge.
Elastomer hydraulic seals.
Threaded connections FF UNI-EN-ISO 228.

- Max operating pressure 4 Bar
- Operating temperature 0 to +90 °C
- Neodymium magnet B = 11000 gauss
- B(T max) / B(T amb)* < 1%
- *T max = 130 °C - T amb = 21 °C

Code	Measure	Kv (m³/h)	Pack	Outer
2405.05.00	G 3/4"	6,81	1	6
2405.06.00	G 1"	7,51	1	4



Series 2344

SafeCleaner2
Multifunction polymer magnetic dirt separator, diverter in brass, with FF ball valves connection.

Plastic polymer cartridge holder body.
Nickel plated brass diverter valve.
Stainless steel AISI 304 filtering cartridge.
Elastomer hydraulic seals.
Threaded connections FF UNI-EN-ISO 228.

- Max operating pressure 4 bar
- Operating temperature 0 to +90 °C
- Neodymium magnet B = 11000 gauss
- B(T max) / B(T amb)* < 1%
- *T max = 130 °C - T amb = 21 °C

Code	Measure	Kv (m³/h)	Pack	Outer
2344.05.50	G 3/4"	6,81	1	6
2344.06.50	G 1"	7,51	1	4
2344.07.50	G 1 1/4"	7,51	1	4



Series 2319

SafeCleaner2
Multifunction polymer magnetic dirt separator, with FF ball valves connection.

Plastic polymer cartridge holder body.
Plastic polymer diverter valve.
Stainless steel AISI 304 filtering cartridge.
Elastomer hydraulic seals. Threaded connections FF UNI-EN-ISO 228.

- Max operating pressure 4 Bar
- Operating temperature 0 to +90 °C
- Neodymium magnet B = 11000 gauss
- B(T max) / B(T amb)* < 1%
- *T max = 130 °C - T amb = 21 °C

Code	Measure	Kv (m³/h)	Pack	Outer
2319.05.50	G 3/4"	6,81	1	6
2319.06.50	G 1"	7,51	1	4
2319.07.50	G 1 1/4"	7,51	1	4





Series 3548

Mag-nus2
Self-cleaning magnetic sludge remover filter for hydraulic systems. Provided with drain ball cock with hose end connector.

Brass body.
Stainless steel AISI 304 filtering cartridge.
Elastomer hydraulic seals.
Threaded connections FF UNI-EN-ISO 228.

- Max operating pressure 10 Bar
- Operating temperature 0 to +100 °C
- Max operating temperature 130 °C
- Neodymium magnet B = 11000 gauss
- B(T max) / B(T amb)* < 1%
- *T max = 130 °C - T amb = 21 °C

Features:



Code	Measure	Kv (m³/h)	Pack	Outer
3548.05.00	G 3/4"	9,50	1	4
3548.06.00	G 1"	10,30	1	4



Series 2863

Airterm Mag
Self-cleaning dirt separator / deaerator. Float operated deaerator. Provided with drain ball valve with hose end connector.

Brass body.
Stainless steel AISI 304 2 Layers filtering cartridge.
Elastomer hydraulic seals.
Threaded connections FF UNI-EN-ISO 228.

- Max operating pressure 10 Bar
- Max operating discharge pressure 10 Bar
- Operating temperature 0 to +110 °C
- Neodymium magnet B = 11000 gauss

Features:



MAXIMUM DISCHARGE PRESSURE 10 bar

Code	Measure	Kv (m³/h)	Pack	Outer
2863.04.00	G 1/2"	7,40	1	6
2863.05.00	G 3/4"	12,66	1	6
2863.06.00	G 1"	20,44	1	6
2863.07.00	G 1 1/4"	28,14	1	6



Magnetic dirt separator + embedded deaerator.



Series 3602

MG Compact
Compact self-cleaning magnetic sludge remover filter hydraulic systems. With drain ball cock. Suitable for boiler room.

Main body in painted steel on the outside.
Steel cover.
Elastomer seals.
AISI stainless steel filter cartridge

- Max operating pressure 10 Bar
- Max operating temperature 95 °C
- Neodymium magnet
- Filtering grade 100 µm

Features:



Code	Measure	Kv (m³/h)	Pack
3602.04.00	G 1/2"	5,50	1
3602.05.00	G 3/4"	9,87	1
3602.06.00	G 1"	16,59	1
3602.07.00	G 1 1/4"	31,10	1
3602.08.00	G 1 1/2"	50,60	1
3602.09.00	G 2"	81,00	1



Series 3541

MG Plus
Self-cleaning magnetic sludge remover filter for hydraulic systems. With drain ball cock. Suitable for boiler room.

Main body and flanges in painted steel on the outside
Steel cover
Elastomer seals
AISI stainless steel filter basket
Pair of pressure gauges, 0-10 bar scale
PN16 flanged couplings

- Max operating pressure 10 Bar
- Max operating temperature 95 °C
- Neodymium magnets
- Filtering grade 100 µm

Features:



Code	Measure	Kv (m³/h)	Pack
3541.09.10	DN 50	14* - 23**	1
3541.10.10	DN 65	35* - 46**	1
3541.11.10	DN 80	42* - 57**	1
3541.13.10	DN 100	55* - 73**	1
3541.14.10	DN 125	100* - 131**	1
3541.15.10	DN 150	141* - 173**	1

*Flow rate with 20 kPa pressure drop

**Flow rate with 30 kPa pressure drop



Flange suitable for coupling with counter-flange UNI EN 1092-1.





Series 3286

NT1 Acid condensation neutralising filter.

Transparent PA polyamide cartridge body.
PA polyamide caps and hose connection fittings.
Polymer fastening collar.
AISI 304 stainless steel neutralising mesh door.
Elastomer hydraulic seals.
MgO-based neutralising bioceramic compound.

Kit inclusive of:

- Acid condensation neutralising filter;
- Fastening collar;
- Pair of elbow hose connection fittings;
- 2 MgO-based neutralising bioceramic compound loads.

Code	Size A	Size B	Pack	Outer
3286.05.00	G 3/4"	DN 20	1	6



Warnings: RBM recommends replacing the residual load annually, at the end or beginning of the season, after the filter has been cleaned.
Use RBM original parts exclusively (code 3290.00.00).



Series 3287

Pair of straight hose connection fittings complete with flat seat seal.

PA polyamide fittings.

Code	Size A	Size B	Pack	Outer
3287.05.16	3/4"	DN 16	6	60
3287.05.20	3/4"	DN 20	6	60

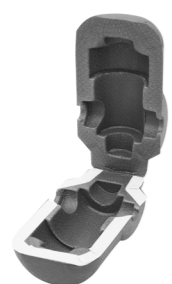


Series 3288

Pair of elbow hose connection fittings complete with flat seat seal.

PA polyamide fittings.

Code	Size A	Size B	Pack	Outer
3288.05.16	3/4"	DN 16	6	60
3288.05.20	3/4"	DN 20	6	60



Series 3289

Insulation shell for NT1 anti-condensation filter made of expanded polyethylene half-bearings with external anticratch coating.

Half-bearings fixed with velcro already applied.

- Fire behaviour class 1
- Density 33 kg/m³
- Max operating temperature -40 to +90 °C

Code	Measure	Pack	Outer
3289.00.00	3/4"	1	5



Required with the installation of NT1 on outdoor boilers, with condensation discharge into the eaves.



Series 3290

MgO-based neutralising bioceramic compound.

Code	Pack	Outer
3290.00.00	10	40



Series 3937

TL1 by Piero Lissoni Thermostatic head. Internal sensitive element with liquid expansion.

Prearranged for temperature limitation and anti-tampering blockage.

- Max storage temperature 50 °C
- Anti-freeze triggering (*) 7 °C
- Setting field (1 to 5) +10 to +30 °C
- Hysteresis 0.3 °C
- Max differential pressure (in flow direction) 1 bar
- Max differential pressure (in return direction) 0.6 bar
- Thermostatic ethyl-acetate bulb liquid

Certifications:



Code	Model	Pack	Outer
3937.00.00*	TL1	10	100

*Licensed use of trademark no. 43



Series 4196

Pair of temperature limiting inserts for TL1 thermostatic head.

For example to block the knob at position 3 (T=20 °C), insert the specific inserts in the two slots close to number 20 on the fixed knob.
To limit the adjustment to a greater value, move the inserts to the desired positions.



Pair of inserts already included in the supply of the TL1 thermostatic head.
Inserts compatible with TL1 thermostatic head.

Code	Pack	Outer
4196.00.00	1	10



TL10 TL30



TL70 TL10W



TL20

Series 590.A

Thermostatic control for thermostatically-controlled valves. Internal sensitive element with liquid expansion.

Prearranged for temperature limitation and anti-tampering blockage.

- Max storage temperature 50 °C
- Anti-freeze triggering (*) 7 °C
- Setting field (1 to 5) +10 to +30 °C
- Hysteresis 0.3 °C
- Max differential pressure (head mounted on valve) 1 Bar
- Thermostatic ethyl-acetate bulb liquid
- Distance sensor cable length 2m (series TL 20)

Certifications:



Features:



Thermostatic head with liquid expansion sensor

Code	Model	Pack	Outer
590.00.00*	TL10	10	100
720.00.30*	TL30	10	100
2633.00.00*	TL70	10	100
3087.00.00**	TL10W	1	50

*Licensed use of trademark no. 43

**Reduced W value

Thermostatic head with distance sensor

Code	Model	Pack	Outer
590.00.10*	TL20	1	25

*Licensed use of trademark nr. 43



Liquid expansion sensor (TL10 - TL30 - TL70 - TL10W).
High energy efficiency.
Approved in Class I.



Series 48

Angle valve with thermostatic option for copper or polyethylene pipe, complying with standard UNI-EN 215.



Nickel brass body.
Double seal obturator.
Elastomer seals.
Shockproof ABS handwheel.
RBM standard threaded angled M connection for copper, polyethylene and multilayer pipe fittings.
Connection to terminal through threaded M RFS (UNI-EN-ISO 228) with PTFE pre-gasket ogive.

- Max operating temperature 110 °C
- Max operating pressure 10 Bar

Code	Measure	Kv (m³/h)	Pack	Outer
48.04.00	G 1/2"	2,45	10	100

⚠ Use fittings with RBM Standard thread for pipe connection.

Series 49

Thermostatic straight valve for copper or polyethylene pipe, complying with standard UNI-EN 215.



Nickel brass body.
Double seal obturator.
Elastomer seals.
Shockproof ABS handwheel.
RBM standard threaded straight M connection for copper, polyethylene and multilayer pipe fittings.
Connection to terminal through threaded M RFS (UNI-EN-ISO 228) with PTFE pre-gasket ogive.

- Max operating temperature 110 °C
- Max operating pressure 10 Bar:

Code	Measure	Kv (m³/h)	Pack	Outer
49.04.00	G 1/2"	1,60	10	100

⚠ Use fittings with RBM Standard thread for pipe connection.

Series 29

Angle lockshield shut-off and regulating valve for copper or polyethylene pipe.



Nickel brass body.
Elastomer seals.
Shockproof ABS cap.
Threaded angled M standard RBM connection for copper, polyethylene, multilayer pipe fittings.
Connection to threaded terminal M UNI-EN-ISO 228 with pre-gasket ogive in PTFE.

- Max operating temperature 110 °C
- Max operating pressure 10 Bar

Code	Measure	Kv (m³/h)	Pack	Outer
29.04.00	G 1/2"	4,0	10	100

⚠ Use fittings with RBM Standard thread for pipe connection.

Series 30

Straight lockshield shut-off and regulating valve for copper or polyethylene pipe.



Nickel brass body.
Elastomer seals.
Shockproof ABS cap.
Threaded straight M standard RBM connection for copper, polyethylene, multi-layer pipe fittings.
Connection to threaded terminal M UNI-EN-ISO 228 with pre-gasket ogive in PTFE.

- Max operating temperature 110 °C
- Max operating pressure 10 Bar

Code	Measure	Kv (m³/h)	Pack	Outer
30.04.00	G 1/2"	1,8	10	100

⚠ Use fittings with RBM Standard thread for pipe connection.

**Series 71**

Compression fitting for polyethylene pipe.

Brass nut, core and pipe clamping ogive.
Nickel plated nut.
Elastomer seal ring.
Standard RBM Threaded F connection.

- Max operating temperature 95 °C
- Max operating pressure 10 Bar

Code	Measure	Pack	Outer
71.16.00	16x2	10	100

Size: Outside Ø x pipe thickness





Series 619.A

Balanflow

Threaded balancing valve, complete with knob indicating the number of turns, and "memory stop" function.

Body and contact parts in brass.
Seals in FKM.
Threaded connections FF UNI-EN-ISO 228.

- Max operating pressure 20 Bar
- Allowed temperatures -30 to +120 °C
- Equipercantage regulation
- Allowed fluid water and water+glycol 50 %
- Pressure gauge plugs connection G1/8"

Certifications:



Code	Measure	Kv (m³/h)	Pack	Outer
619.04.50	G 1/2"	3,35	1	6
619.05.50	G 3/4"	4,00	1	6
619.06.50	G 1"	11,20	1	6
619.07.50	G 1"1/4	13,40	1	6
619.08.50	G 1"1/2	19,00	1	6
619.09.50	G 2"	28,40	1	6



Designed for the insertion of pressure plugs for indirect flow rate reading.



To provide for a pair of pressure plugs accessories code 621.01.50



Series 619.B

Balanflow

Flanged balancing valve, complete with knob indicating the number of turns, and "memory stop" function.

Cast-iron body.
Elastomer seals.
Flanged connections PN 16.

- Max operating pressure 16 Bar
- Allowed temperatures -10 to +130 °C
- Equipercantage regulation
- Allowed fluid water and water+glycol 50 %
- Pressure gauge plugs connection G1/8"

Code	Measure	Kv (m³/h)	Pack	Outer
619.10.60	DN 65	93,40	1	1
619.11.60	DN 80	122,30	1	1
619.13.60	DN 100	200,00	1	1
619.14.60	DN 125	304,40	1	1
619.15.60	DN 150	400,80	1	1
619.17.60	DN 200	685,60	1	1
619.19.60	DN 250	952,30	1	1
619.21.60	DN 300	1380,20	1	1



Valve provided with two pressure plugs.



Flange suitable for coupling to counter-flange UNI EN 1092-1.



Series 621

Pair of pressure plugs.

Body and plugs in brass.
Elastomer pressure plugs internal seals.
Threaded connections M UNI-EN-ISO 228.

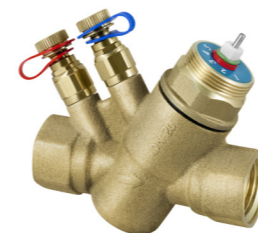
- Max operating pressure 16 Bar
- Max operating temperature 120 °C

Code	Measure	Pack	Outer
621.01.50*	1/8"	1	10

*Pressure plugs for balancing valves and threaded stub pipes.



Pressure plugs for needle adapters code 932.01.00
Accessory supplied with the digital meter code 3566.00.00



Series 2874.B

Pressure independent control valve, provided with pressure plugs.

It allows to keep the flow rate to the desired level even when pressure conditions change in the circuit where it is inserted.

Brass body.
Polymer cartridge with elastomer diaphragm.
Indicator with graduated scale.
Threaded connections FF UNI-EN-ISO 228.

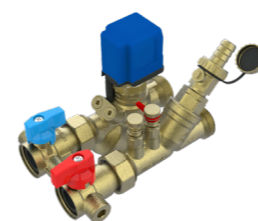
- Max operating pressure 16 Bar
- Allowed temperatures -20 to +120 °C
- Allowed fluid water and water+glycol 50%
- Pressure gauge plugs connection G1/8"

Code	Measure	DP (kPa)	Flow rate (m³/h)	Cartridge
2874.04.50	1/2"	16 - 200	0,037 - 0,575	G
2874.04.60	1/2"	30 - 400	0,064 - 1,110	B
2874.05.50	3/4"	16 - 200	0,037 - 0,575	G
2874.05.60	3/4"	30 - 400	0,064 - 1,110	B
2874.06.50	1"	16 - 200	0,037 - 0,575	G
2874.06.60	1"	30 - 400	0,064 - 1,110	B

G = O.R. Grey
B = O.R. Black



Replaceable cartridge. See Service Division.
Cartridges are available in different colours for both the pressure field and flow rate to be immediately identified.
Valve provided with two pressure plugs.



Series 3717

Valve system that combines the pressure independent control valve with isolation, flushing, draining and commissioning components into a prefabricated tested and ready to install terminal bypass unit.

It allows pressure independent control ensuring full stroke against pressure fluctuation.
It can be used also for flushing and isolating operations at whatever of commissioning and maintenance stage.
The unit can be used for both heating and cooling.

All components made in DZR Brass.
Threaded connections FF UNI-EN-ISO 228.

- Max operating pressure 25 Bar
- Allowed temperatures -10 to +120 °C
- Allowed fluid water and water+glycol 50%

Code	Measure	Flow rate (m³/h)	Pack
3717.05.50	3/4"	0,4	1
3717.05.60	3/4"	0,7	1
3717.05.70	3/4"	1,3	1



Supplied with:
isolation valves
strainer
draining point
P/T plugs
integrated venturi metering station
PICV valve for flow, temperature and pressure control



Series 3566

Portable electronic differential pressure and flow rate measuring instrument. Suitable for detecting work parameters of balancing valves and of measuring stub pipes. Battery-operated.

Supplied complete with professional case and holes for connection to circuit.
Pair of adapters code 932.01.00 not included.

- Max allowable static pressure: 20 Bar
- Measurement range: 2 kPa to 600 kPa
- Accuracy: +/-2% of reading or +/-0.2 kPa whichever is the greater

Instrument with the following accessories:

- Pair of pressure plugs code 621.01.50
- Adapter kit code 1422.02.00
- Cartridge adjustment spanner code 2961.00.02

Code	Pack	Outer
3566.00.00	1	1



Option of using the instrumental rental service. Contact RBM's sales department for the terms, conditions and prices.



Series 932

Pair of needle adapters to measure pressure.

Connection of the electronic differential pressure measuring instrument to the pressure plugs on the measuring stub pipes and RBM balancing valves.

Brass body.
Steel needle.
Threaded connections F UNI-EN-ISO 228.

- Max operating pressure 16 Bar
- Max operating temperature 120 °C

Code	Measure	Pack
932.01.00	1/8"	1



Used to connect pressure plugs code 621.01.50 to digital measuring instrument code 3566.00.00



Series 2882

Electromechanical actuator. Complete with ring nut clamping to valve body and power supply cable.

Normally closed valve position when power missing.

- Power supply 24/230 V
- Consumption 5 W
- Frequency 50Hz
- Electric protection IP54
- Cable length 1 m

Code	Power supply	Pack
2882.00.02	24V AC 0 to 10V	1
2882.00.12	110-230V AC 3 POINTS	1
2882.00.22	24V AC 3 POINTS	1



Specific accessory for independent pressure control valve series 2873 and 2874.



Series 2881

Thermo-electric actuator. Complete with ring nut clamping to valve body and power supply cable.

Normally closed valve position when power missing.

- Power supply 24/230 V
- Consumption 2,5 W
- Frequency 50Hz
- Electric protection IP54
- Cable length 1 m
- Nominal thrust 170N

Code	Power supply	Pack
2881.00.12	24V AC/DC	1
2881.00.22	230V AC	1

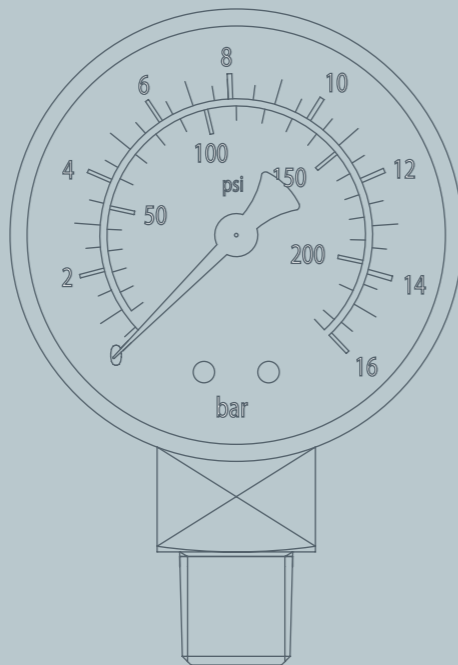
Version without auxiliary microswitch (2 wires)



Specific accessory for independent pressure control valve series 2873 and 2874.



RBM SERVICE & ACCESSORIES



Series 4120

PHONOFIX Stabilising layer for parquet

PHONOFIX is a low-thickness, desolidarising and reinforcing elastodynamic resilient acoustic layer designed for the application of parquet glued with the KILMA FUTURA system.

- Nominal thickness 2 mm
- Supplied in 20 m rolls (covered area 20 m²)
- Compressive strength (CS): 127 kPa (0.5 mm strain)
- Thermal conductivity: $\lambda = 0,037$ W/mK
- Thermal resistance: $R_t = 0,054$ m²K/W
- Reaction to fire class: Cfl-s1 (3)

Code	Length (m)	Width (cm)	Pack
4120.00.00	20	100	1



It provides a significant increase in impact sound insulation in both renovations and new constructions. Can be used in all environments, both residential and tertiary. Low thickness, does not require changes to existing dimensions. Low thermal resistance (compatible with underfloor heating systems even when laid under the floor). Enables glue-in installation of parquet directly onto Kilma Futura with low thickness/low inertia.



Series 483

Corrugated sheath pipe protector.

Can also be used as a pipe protector at the manifold, and at the screed dilation joints (code 472.15.12).

Compatible systems:
KILMA-ISI
KILMA-GRAF
KILMA-RETE
KILMA-INDUSTRIALE
KILMA-FUTURA

Code	Measure	Roll (m)	Pack
483.25.02*	Ø 25	50	1
483.32.02**	Ø 32	25	1

*Ø sheathed pipe 17x2

**Ø sheathed pipe 20x2 - 25x2.3



Accessory that can be used on Kilma-Isi, Kilma-Graf, Kilma-Rete, Kilma-Industriale and Kilma-Futura radiant systems.



Series 2944.A

Thermo-electrically controlled actuator for compact zone valves, complete with valve body clamping ring nut and electric power cable.

Normally closed valve position when power missing.

- Power supply 24/230 V
- Consumption 2,5 W
- Frequency 50/60 Hz
- Electric protection IP54
- Operating temperature +5 to +50 °C
- Switch contact rating (0.5A) 1 A (if any)
- 5 mm stroke
- Size (l x h x p): 44x52x60 mm

Certifications:



Thermo-electrically controlled actuator

Code	Power supply	Pack
2944.00.02	230V AC	1
2944.00.12	24V AC	1

Version without auxiliary microswitch (2 wires)

Thermo-electrically controlled actuator with auxiliary microswitch

Code	Power supply	Pack
2944.00.42	230V AC	1
2944.00.52	24V AC	1

Version supplied with auxiliary microswitch (4 wires)





Series 3189

Thermo-electrically controlled servo motor for valve with thermostatic option, complete with valve body clamping ring nut and electric power cable.

Normally closed position when there is no power.

- Power supply 24/230 V
- Consumption 1.2W
- IP54 protection rating
- Operating temperature 0 to +60°C
- 5 mm stroke
- Cable length 1 m

Certifications:



Thermo-electrically controlled actuator

Code	Power supply	Pack
3189.00.02	230V AC	1
3189.00.12	24V AC	1

Version without auxiliary microswitch (2 wires)

Thermo-electrically controlled actuator with auxiliary microswitch

Code	Power supply	Pack
3189.00.42	230V AC	1
3189.00.52	24V AC	1

Version supplied with auxiliary microswitch (4 wires)



Servo control to be matched with modular brass SERIES 3202 manifolds with a 37 mm centre distance.
Servo control with a first-open feature to make installation easier. See the instruction manual for details.



Series 778

Vapour barrier.

Roll, sheet in PE with moisture barrier feature.

- Roll width: 1m
- PE sheet width: 2 m (folded in the middle)
- Roll length: 100 m

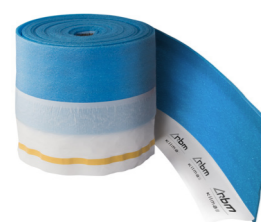
Compatible systems:

KILMA-ISI
KILMA-GRAF
KILMA-RETE
KILMA-INDUSTRIALE
KILMA-FUTURA

Code	Thickness (mm)	Pack
778.20.02	0,2	1



Accessory that can be used on Kilma-Isi, Kilma-Graf, Kilma-Rete, Kilma-Industriale and Kilma-Futura radiant systems. Fitted with cross marking with 100 mm installation pitch.



Series 472.A

Base edging joint.

Adhesive edging dilation joint, in polythene LPDE foam containing grout.

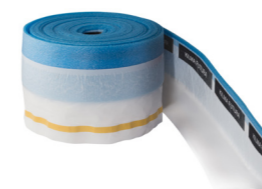
Compatible systems:

KILMA-ISI
KILMA-GRAF
KILMA-RETE

Code	Height (mm)	Thickness (mm)	Roll (m)	Pack
472.15.12	150	8	60	1
475.25.12	250	8	60	60



Accessory that can be used on Kilma-Isi, Kilma-Graf, Kilma-Rete and Kilma-Industriale radiant systems. Adhesive on the full height of the joint.



Series 472.B

Base edging joint.

Adhesive edging dilation joint, in polythene LPDE foam containing grout.

Code	Height (mm)	Thickness (mm)	Roll (m)	Pack
472.08.12	80	5	25	1



Accessory that can be exclusively used on the Futura radiant system.



Series 2531

Sound absorbing L-shaped base edging joint.

Code	Dim. (mm)	Length (m)	Pack
2531.16.02	160x50x6*	2	120



Great sound absorbing properties.



Series 2532

Adhesive joint tape.

Adhesive joint tape which prevents the formation of acoustic bridges between 2 adjacent panels and creates a single insulating layer.

- Tape width 10 cm
- Tape length 25 m
- Thickness 3 mm

Code	Length (m)	Width (cm)	Pack
2532.10.02	25	10	1



Great sound absorbing properties.



Series 3670

Screed expansion joint with adhesive base.

- Joint height 100 mm
- Profile length 2 m

Compatible systems:

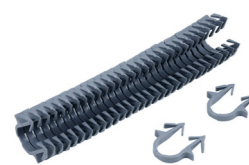
KILMA-ISI
KILMA-GRAF
KILMA-RETE

Code	Length (m)	Pack
3670.10.02	2	90



Accessory to be used on Kilma-Graf, Kilma-Isi and Kilma-Rete radiant systems.





Series 468

Pipe fastener clip.

Pipe anchor clip for KILMA panel
Made of plastic with anchoring lugs.

Compatible systems:

KILMA-ISI
KILMA-GRAF

Pipe fastener clip

Code	Measure	Pack	Outer
468.45.12	45x20	1000	10000
468.45.00*	45x20	300	300
468.39.02**	39x20	1050	1050
19475702***	56x20	300	300

* Pack for fixing with special fastener clip tool code 469.00.02 - Clips joined together by heat-sealing

** Pack for fixing with special fastener clip tool code 469.00.02 - Low clip to be used with thin panels (up to 20mm thick). Suitable for fixing pipes maximum \varnothing 17 mm - Pack for fixing with special fastener clip tool code 469.00.02 - Clips joined together by heat-sealing

*** Pack for fixing with special fastener clip tool code 469.00.02 - Clips joined together by heat-sealing

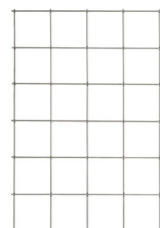
Strong pipe fastener clip

Code	Measure	Pack	Outer
2003.42.02*	42x20	1050	1050

* Pack for fixing with special fastener clip tool code 469.00.02 - Strong clip to be used with aluminised panels - Clips joined together with adhesive tape



Accessory that can be used on Kilma-Isi and Kilma-Graf radiant systems.



Series 476.A

Electro-welded binding mesh \varnothing 2 mm for screed.

Galvanised electro-welded mesh panels for underfloor heating which drastically reduces the formation of cracks in concrete screed. Overlap of 75 mm with very little waste.

- Dimension 991x2060 mm
- Wire diameter 2 mm

Compatible systems:

KILMA-ISI
KILMA-GRAF
KILMA-RETE

Code	Mesh (mm)	Pack	Pack m ²
476.40.02	75x75	1	40,80



Accessory that can be used on Kilma-Isi, Kilma-Graf and Kilma-Rete radiant systems.
Binding function for concrete screeds.
Supplied in bundles of 20 panels.



Series 825

Mesh fastener clip.

Clip for fixing the mesh to the Kilma panel, made of plastic with anchoring lugs.

- Centre distance 75 mm
- Height 28 mm

Compatible systems:

KILMA-ISI

Code	Centre distance (mm)	Height (mm)	Pack
825.00.02	75	28	100



Accessory that can be used on the Kilma-Isi radiant system.



Series 475.A

Kilma-Therm Super fluidifying additive "KILMA-THERM".

Superfluidifying liquid additive for concrete screeds. Improves workability and performance characteristics. Gives the screed greater mechanical resistance and a higher thermal conductivity.

Compatible systems:

KILMA-ISI
KILMA-GRAF
KILMA-RETE

Code	Weight (kg)	Capacity (l)	Pack
475.10.02	10	9,80	1
475.25.02	25	24,5	1



Accessory that can be used on Kilma-Isi, Kilma-Graf, Kilma-Rete and Kilma-Industriale radiant systems.
Recommended dose: 1.0-1.2 Kg additive every 100 Kg of cement.



Series 475.B

Polypropylene short fibre additive for concrete screeds.

Improves the elasticity and resistance of the screed, eliminating the risk of cracks as a result of plastic shrinkage in floors not properly wet cured. Non-flammable product. Excellent resistance to acids, bases and chemical agents present in cement mixes.

Compatible systems:

KILMA-ISI
KILMA-GRAF
KILMA-RETE

Code	Weight (kg)	Pack
475.10.12	1	1



Accessory that can be used on Kilma-Isi, Kilma-Graf and Kilma-Rete radiant systems.
Dosage for mixes with average cement content: 0.9 kg/1 m³ of screed.
To restore workability (concrete treated with fibre additive) combine with KILMA-THERM 0.5 to 0.7 l/100kg cement.



Series 862.A

Rail for fastening of the pipe.

Profile in plastic, sections of 1m in length which can be hooked together for a custom size.

Compatible systems:

KILMA-INDUSTRIALE

Code	Suitable for pipes	Pitch (mm)	Pack
862.16.00	\varnothing 16-17	50	80
862.16.10*	\varnothing 16-17	50	80
862.20.00	\varnothing 17-20-25	100	50
862.20.10*	\varnothing 17-20-25	100	50
862.24.42**	\varnothing 20	50	63

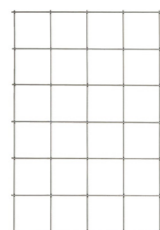
* with fixing adhesive

** with fixing anchors



Accessory that can be used on the Kilma-Industriale radiant system.
Suitable for Kilma-flex polyethylene pipe and Tita-fix multi-layer pipe





Series 476.B

Electro-welded mesh Ø 3 mm for pipe anchoring.

Galvanised electro-welded mesh panels for underfloor heating.

- Size 1200x2100 mm
- Wire diameter 3 mm

Compatible systems:
KILMA-RETE
KILMA-INDUSTRIALE

Code	Mesh (mm)	Pack	Packm ²
476.10.02	100x100	1	40



Accessory that can be used on Kilma-Rete and Kilma-Industriale radiant systems.
Pipe fastener clip anchoring function.
Supplied in bundles of 15 panels.



Series 595.A

Automatic pipe fastener clip for electro-welded mesh Ø 3 mm.

Plastic clip for anchoring the pipe to the electro-welded mesh (Code 476.10.02).
Wire diameter of 3 mm.
Fastening by clip fastener tool.

Compatible systems:
KILMA-RETE

Code	Suitable for pipes	Pack
595.00.42	Ø 17	1700



Accessory that can be used on the Kilma-Rete radiant system.



Series 595.B

Manual flat pipe fastener clip for electro-welded mesh Ø 3 mm.

Plastic clip for anchoring the pipe to the electro-welded mesh (Code 476.10.02).
Wire diameter of 3 mm.

Compatible systems:
KILMA-RETE

Code	Suitable for pipes	Pack
595.00.12	Ø 17	500



Accessory that can be used on the Kilma-Rete radiant system.



Series 862.B

Rail for fastening of the pipe.

Profile in plastic, sections of 900 mm in length which can be hooked together for a custom size.

Code	Suitable for pipes	Pitch (mm)	Pack
862.10.00	Ø 10	60	6



Series 595.C

Manual pipe fastener clip for electro-welded mesh Ø 3 mm.

Plastic clip for anchoring the pipe to the electro-welded mesh (Code 476.10.02).
Wire diameter of 3 mm.

Compatible systems:
KILMA-RETE
KILMA-INDUSTRIALE

Code	Suitable for pipes	Pack
595.00.00	Ø 17 - 20	200



Accessory to be used on Kilma-Rete and Kilma-Industriale radiant systems.



Series 595.D

Manual pipe fastener clip for electro-welded mesh Ø 6 mm.

Clip made of plastic for anchoring the pipe to the electro-welded mesh.
Wire diameter of 6 mm.

Compatible systems:
KILMA-INDUSTRIALE

Code	Suitable for pipes	Pack
595.00.22	Ø 20	200
595.00.52	Ø 25	100



Accessory that can be used on the Kilma-Industriale radiant system.



Series 470

Fixing clamp.

Clamp made of plastic for fastening the pipe to the electro-welded mesh (Cod.

Compatible systems:
KILMA-INDUSTRIALE

Code	Size A	Pack
470.00.02	x	1000



Accessory that can be used on the Kilma-Industriale radiant system.



Series 1200

Pipe clip for mesh.

Ideal to fasten the pipe (up to Ø 25) to the industrial mesh (max Ø 8 to 10 mm).

Compatible systems:
KILMA-INDUSTRIALE

Code	Suitable for pipes	Pack
1200.00.02	up to Ø 25	50



Accessory that can be used on the Kilma-Industriale radiant system.



Series 1333

Double mesh spacer.

The ideal solution to assure maximum grip of the metal structure inside the castings, for increased resistance to compression.
It ensures that the structure is raised from the bottom (3 cm) and that there is an excellent distance between the two meshes (6 cm) and the PE-X pipes.

Compatible systems:
KILMA-INDUSTRIALE

Code	Length (mm)	Height (mm)	Pack
1333.00.02	150	95	1800

Pack: 1800 pcs. on pallet wrapped with PE film.



Accessory that can be used on the Kilma-Industriale radiant system.





RBM Systems Pty Ltd

PO Box 4104
Gumdale QLD 4154
Australia

ABN 86 640 763 239

+61 7 3073 2428

hello@rbmsystems.com.au
rbmsystems.com.au